

The Royal Courts of Justice



Your guide to
**PSYCHOLOGY &
SOCIOLOGY**
school trips 2019-20

Organising a school trip?

We're here to help.

We know it can be time consuming to plan a school trip, that's why we work hard to ease the pressure on teachers.

Choose NST for:

- The widest range of inspiring tour programmes & student events matched to the latest exam board specifications
- A tailor-made quote with no hidden costs & flexibility to hold arrangements until deposits are collected
- FREE trip launch kit & educational resource packs
- A dedicated, educational travel expert to take care of all the details & create a smooth-running daily itinerary
- My Tour Manager - our award-winning online trip organiser - to give teachers 24/7 access to their school trip information and help keep on track of admin
- Instant access to trip information whilst on tour with our award-winning travel app
- 24-hour emergency cover, audited accommodation & transport, a wide choice of assessed excursions & FREE preview visits to assist with risk assessment planning
- On-the-ground support from NST's representatives, guides & escorts in many of our destinations
- Reassurance for parents & teachers with NST's Locate My Trip providing live updates on a group's tour location
- Financial protection - NST are fully bonded through ABTA & ATOL
- More than 50 years' experience of creating expertly planned school trips that suit the individual needs of each group



Looking for a helping hand for your next school trip?
Get in touch today.

Call 0845 293 7975 Email us at info@nstgroup.co.uk
Visit nstgroup.co.uk or chat online



We're the travel company of choice for over 35,000 group leaders. We've been awarded the Feefo Gold Service award, an independent seal of excellence for delivering exceptional experiences, as rated by real customers.



With you every step of the way

Taking learning beyond the classroom is widely known to help young people build strong, positive relationships and independence, as well as improving academic achievement. A school trip often brings a sense of experience and enjoyment to learning, supporting the wider character development and resilience students need to deal with life's inevitable challenges.

At NST, we passionately believe in the importance of enriching educational experiences outside the classroom. That's why you won't find a wider choice of destinations, inspiring visits, educational guided tours, and hands-on workshops anywhere else. This year, we've also introduced our LIVE! student events led by industry professionals, giving students a bridge into the world beyond the classroom as they prepare to become work-ready.

When it comes to organising a school trip, we understand just how much time and energy it can take on top of teaching. What's more, many schools are not aware that when they arrange transport, accommodation, and other services directly themselves, they'll have all the responsibilities of a travel company - both legal and financial - under the new Package Travel & Linked Travel Arrangements Regulations 2018.

That's where NST can help. We're an LOfC accredited provider, giving you peace of mind that all the elements of your trip have been carefully checked on your behalf - a view supported by the DfE's recent recommendations on selecting a travel provider.

We're the travel company of choice for over 35,000 group leaders, but we know that what counts is the help and support that you receive. That's why we're committed to doing our absolute best to provide you with the experience and support that you need to match your requirements and budget and create a school trip that your students will remember long after they return to the classroom.



Steve Craven
NST Director



Contents

Inside our guide you'll discover some of the most intriguing destinations to explore and bring psychology & sociology to life.

INTRODUCTION	2-3
LONDON	4-7
VIENNA	8-9
KRAKOW	10-11
BERLIN	12-13
NEW YORK	14-15

START PLANNING & SAVE!

Book by the end of May 2019 & SAVE
£20pp on all long haul tours
& £10pp on all European tours.

FREE PLACES

We offer a generous free place ratio
of 1 in 10 for air travel
and 1 in 8 for coach travel.

LOYALTY REWARD

Save £5pp from your first consecutive
year of travel onwards with our
loyalty reward.

INSPECTION VISITS

Free inspection visit to assist with your
school tour risk assessments.
2 night complimentary stay for 2 people
in your chosen destination.



Lochaber High School

prices start from

£99 pp

See page 6 for what's included

London

We take almost 600 groups to London every year! A trip here offers immense value to psychology and sociology pupils, and is an ideal way to boost grades. We can tailor an itinerary to suit your group's exact requirements, including travel, accommodation, educational visits and meals. From our exclusive mental health visits to a Jack the Ripper walking tour, you can cover a wide range of study topics to cover GCSE and A level curriculum themes in and around central London.

NEW for 2019/20

BESPOKE VISITS TO THE BRITISH PSYCHOANALYTICAL SOCIETY

The British Psychoanalytical Society is an internationally renowned centre of excellence in training and clinical services and we're honoured to be working with them to offer experiences to our groups. Some members were responsible for setting up and developing psychoanalytically informed clinics in the National Health Services, such as the Tavistock Clinic, The Portman Clinic and the Maudsley Hospital.

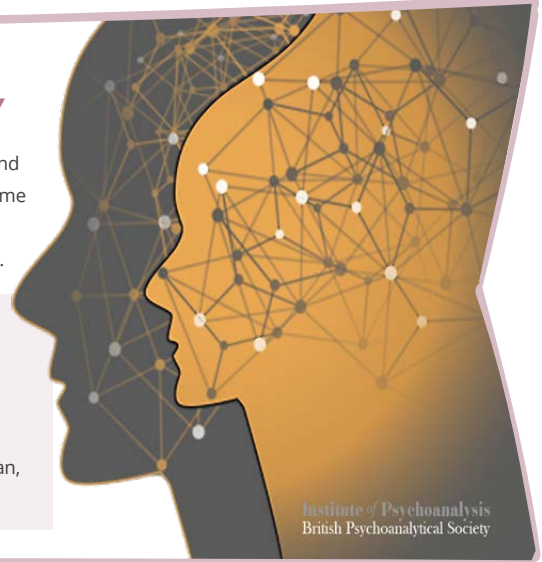
Choose from these tailored experiences:

Two hour long visits:

Covering a topic of interest of your choice, plus a talk on careers in psychology.

Experience days:

Your students will have the opportunity to experience first-hand what it is like to work as a clinician, have team meetings and be a service user. A certificate of participation and lunch is provided.



Institute of Psychoanalysis
British Psychoanalytical Society

Psychology tour study themes

- Memory
- Research & Treatment Methods
- Social Development & Influence
- Intelligence & Learning
- Health & Clinical Psychology
- Psychopathology
- Prejudice & Ethics
- Depression, Stress & Addiction
- Dysfunctional Behaviour
- Fear
- Phobias

Trip highlights

PRICING KEY FOR VISITS **FREE** Free £ Under £5pp £ £ Under £10pp £ £ £ £10pp+



CENTRE OF CLINICAL HYPNOTHERAPY WORKSHOPS

A fantastic range of exclusive psychology hypnotherapy workshops covering the following study themes; Phobias, Stress/Anxiety, Fear, Depression (inc. suicide), Sleep/Insomnia, Eating disorders. Some hypnosis can be included in the sessions (over 16s only).



SLEEP ASSESSMENT & ADVISORY SERVICE (SAAS)

Informative 90-minute sessions delivered by an expert from SAAS and can focus on a range of relevant study themes, which can be tailored specifically to your requirements. Topics include; Sleep disorders, Sleep & the law, Dreaming, The brain during sleep, Mental illness & sleep.



BETHLEM MUSEUM OF THE MIND

Europe's first and oldest institution to specialise in mental illness. The hospital museum, Museum of the Mind, is located on Bethlem Hospital site, and the premises includes a dedicated learning space, permanent exhibition, temporary exhibition gallery and archive search room.



HORRIBLE OLDE LONDON

WALKING TOUR Covering the Smithfield and Bankside area - there's persecution, burnings at the stake, grave robbing, the horror of the Great Fire, an infamous prison and its gallows, a scary ghost, traitors' heads on gates, prostitution, riots and other general unpleasantness - all on one walking tour!



ROYAL COURTS OF JUSTICE

Suitable for KS3-5, this exciting visit to the historic Royal Courts of Justice will have your group talking for weeks! Choose from Court in Session or Motion to Appeal - these two-hour sessions take place in a working court room and around the courts.



LEGAL LONDON TOUR

Combining both the Old Bailey and the Royal Courts of Justice, walk in the footsteps of some of the country's most renowned legal minds. Covering the Old Bailey and a guide to the most interesting trials being heard that day, you will have the knowledge to make an informed choice of which case to watch.

Crime & Punishment visits are also ideal for pupils studying WJEC Criminology level 3



JACK THE RIPPER WALKING TOUR

Discover first-hand the historical context of Whitechapel in the late 19th century as well as in-depth historical knowledge on Jack the Ripper. This eerie yet informative evening activity led by expert guides provides an insight into the mind-set of this renowned murderer.



LONDON DUNGEONS

The Dungeon will reinforce your pupils' historical education in an accurate, dramatic and thought-provoking way. Witness scenes of British history depicting human sacrifice, martyrdom, torture, witchcraft and many little known yet curious facts of the lives of our forebears.



CLINICAL HYPNOTHERAPY - FEAR OR PHOBIA WORKSHOP

Pupils will gain an understanding of why and how fear and phobias manifest when we face change or are under stress. Learn how fear works and how we react as we do. Sessions last 90 minutes.

Trip highlights continued



FREUD MUSEUM

Explore Freud's life and work, step into his consulting room (including the world-famous couch). Discuss his work with a member of the museum's education team. The museum can provide your group with tailored discussion sessions on a range of psychoanalytic topics.



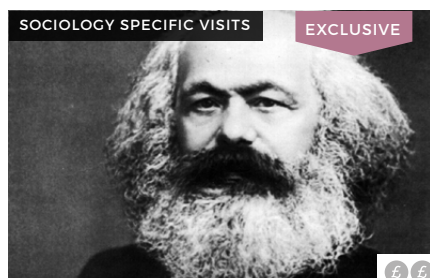
HOLOCAUST EXHIBITION

The informative Holocaust exhibition at the Imperial War Museum uses historical material to tell the story of the Nazi persecution of the Jews and other groups before and during World War II.



NATURAL HISTORY MUSEUM

Visit the museum and explore the interactive human biology gallery, which covers memory and how our memory functions, how senses influence perception, and an insight into the human body.



KARL MARX WALKING TOUR

Take a two-hour walk through the life, times and ideas of Karl Marx. Visit the places in and around Soho where Marx lived and worked, and hear the extraordinary tale of this man who would change the world.



LONDON, SUGAR & SLAVERY EXHIBITION

Visit this permanent exhibition at the Museum of London Docklands, that examines London's involvement in transatlantic slavery. Be touched by the real objects, stories, art and music that have left their legacy on the capital today.



SUFFRAGETTE WALKING TOUR

Your expert guide will meet you close to where the headquarters of the Women's Social & Political Union once was, and the tour ends at Emmeline Pankhurst's statue. The route takes in some of the best-known sights of London.

Leisure visits

• THE SHARD £ £

• THAMES RIVER CRUISE £

• WEST END SHOW £ £ £

SEE MORE ONLINE

Where you will be staying



MEININGER HOTEL HYDE PARK

In an ideal central location offering a unique blend of high quality accommodation, full meal options and large selection of conference rooms.



YHA THAMESIDE

This youth hostel offers basic accommodation and good facilities for groups at a very reasonable price.

Suggested itinerary

Day 1 Morning departure from school.
Freud Museum visit and discussion session. Evening meal
Jack the Ripper walking tour.

Day 2 **Institute of Psychoanalysis session.**
Departure for return journey to school.

Additional day option

Clinical Hypnotherapy workshop.
Royal Courts of Justice session in a working court room.
West End show of your choice.

For prices for this itinerary, please call us.

Price includes: 1 night B&B accommodation, executive coach transport from & to school & throughout your stay, group travel insurance & 1 in 8 free place ratio. Price shown based on 40 paying passengers from selected departure points, travelling November 2019.

Get more out of your London experience with one of our PSYCHOLOGY CONFERENCES

HODDER EDUCATION CRIMINOLOGY CONFERENCE

19TH NOVEMBER 2019

We're delighted to announce that we're teaming up with Hodder Education again to support the hugely popular psychology, sociology and law student conference in London this autumn!



£ £ £

Give your sociology, law and psychology A Level students the opportunity to see the study of criminology in practice at the Hodder Education Criminology Student Conference!

During the event students will hear from expert speakers providing real-world insights into the criminal justice process.

The event gives students the opportunity to explore a range of relevant topics, speak to crime experts and take part in an exciting pre-conference activity to solve a case!

Also being held in Manchester on 20th November & Nottingham on 21st November. Call us for details.

SCIENCE & PSYCHOLOGY

3RD DECEMBER 2019

This exciting conference aims to educate, entertain and enthuse your students, facilitating their understanding of science and increasing their motivation for studying psychology.

£ £ £

CONTENT & SPEAKERS (SUBJECT TO CONFIRMATION) INCLUDE:

- **Dr Peter Lovatt**
- Dance, Hormones & Thinking
- **Oliver Meech**
- Amazing Brains: The Psychology of Magic
- **Phil Banyard, Mike Cardwell, Cara Flanagan**
- Exploring the Boundaries Between Science & Pseudoscience
- **Andrew Newton**
- A demonstration of hypnosis

The conference will also be taking place in Bristol on 2nd December & in Edinburgh on 4th December 2019.

THE ZIMBARDO CONFERENCE

MARCH 2020 - DATES TO BE CONFIRMED

£ £ £

Dr Philip Zimbardo will share his views on the nature of evil, revisit the Milgram obedience studies, his Stanford Prison experiment, take us to the torture dungeon at Iraq's Abu Ghraib, and describe why it is essential to understand not only individual temperament, but also situational forces and powerful system influences that create, justify and maintain, evil-generating situations.

Other speakers to be confirmed.





BOOK BY
END OF MAY
& SAVE
£10 pp

prices start
from
£395 pp
See page 9 for what's included

includes NST
Educationalist
Guide & visits

Vienna

Vienna is considered to be the city of dreams because it was home to Sigmund Freud and is the birthplace of psychoanalysis. In addition, it is a city linked with the atrocities of World War II, where cheering crowds greeted Hitler's arrival in March 1938 and the destruction of the city's Jewish community followed. We very highly recommend the services of an NST Educationalist Guide during your tour to provide in-depth background information and to help put visits into context, adding huge benefits to your experience.



NST's Psychology Educationalist Guides

Our Psychology Educationalist Guides have a strong teaching background and a great deal of relevant expertise. They aim to educate, entertain and enthuse your pupils, and facilitate their understanding.

Study themes

- Psychoanalysis
- Psychopathology
- Conformity
- Prejudice & Discrimination
- Tyranny
- Ethics
- Cultural Influence
- Genius

Trip highlights



SIGMUND FREUD MUSEUM
Take a guided tour of Freud's former apartment and office, and explore the exhibition documenting the life and work of the founder of psychoanalysis, as well as original furnishings, articles of daily use and antiques from Freud's collection.



NARRENTURM (FOOL'S TOWER)
Enjoy a one-hour guided tour covering the history of the Narrenturm, now home to the Federal Pathologic-Anatomical Museum. Explore the building's history as a mental hospital and a walk through the fascinating pathological exhibits.



WALKING TOUR OF KEY CITY SITES
When travelling with an NST Educationalist Guide, take a full or half-day walking tour of the key city sites, which includes St Stephen's Cathedral and the balcony where Hitler addressed several hundred thousand enthusiastic Austrians in March 1938.

Trip highlights continued



JEWISH MUSEUM VISITS

- Jewish Museum - Provides an interesting picture of Jewish cultural and religious life in Vienna.
- Judenplatz Area & Museum - Explore the museum and memorial for the Austrian victims of the Holocaust.
- Stadttempel - the only synagogue of Vienna to survive the Kristallnacht.



JOSEPHINUM MEDICAL MUSEUM PSYCHOLOGY TOUR

A tailor-made psychology-focused tour around this fascinating museum will showcase Vienna's cultural heritage. The museum is part of the Medical University of Vienna.



MOZARTHAUS VIENNA

Take either an English audio tour or a tailored guided tour of the 'genius' Mozart's apartment in Vienna and four exhibition floors. School classes are provided with comprehensive information on Mozart's years in Vienna, which marked the high point in his creativity.

Don't miss...

• BELVEDERE PALACE

The Belvedere Palace was home to Crown Prince Franz Ferdinand. The two palaces and gardens are spectacular and now house one of the greatest paintings in the world – Gustav Klimt's *The Kiss* as well as other works by Secession artists.

• VIENNA ZOO

The oldest zoo in the world, Vienna Zoo was constructed in 1752 by Emperor Francis on the grounds of the family's summer Schönbrunn Palace a short ride to the outskirts of Vienna on the U-Bahn. It is one of only a few zoos in Europe to have giant pandas. Tours are available.

• MUSEUM QUARTER – NATURAL HISTORY MUSEUM

An ideal place to spend your last morning.

• RIESENRAD 'PRATER PARK'

An ideal way to end a day! The 'Prater Park' is home to many rides, including the Riesenrad, which was once the largest Ferris wheel in the world.

SEE MORE ONLINE 

Suggested itinerary

- Day 1** Daytime flight & transfer to accommodation.
Introductory tour of the city.
Free time to settle in.
- Day 2** Visit to the **Sigmund Freud Museum.**
Guided tour of Narrenturm (Fool's Tower) and exploration of central Vienna.
- Day 3** Visit the **Jewish Museum, Judenplatz Museum** and **Holocaust Memorial.**
Walking tour of the Old Town & Leopoldstadt (Jewish District).
A ride on the famous Ferris wheel in Prater Park.
- Day 4** Free time at the **Natural History Museum.**
Transfer to airport for return flights to UK.

Suggested itinerary included in price.

Where you will be staying



MEININGER HOTEL VIENNA DOWNTOWN FRANZ

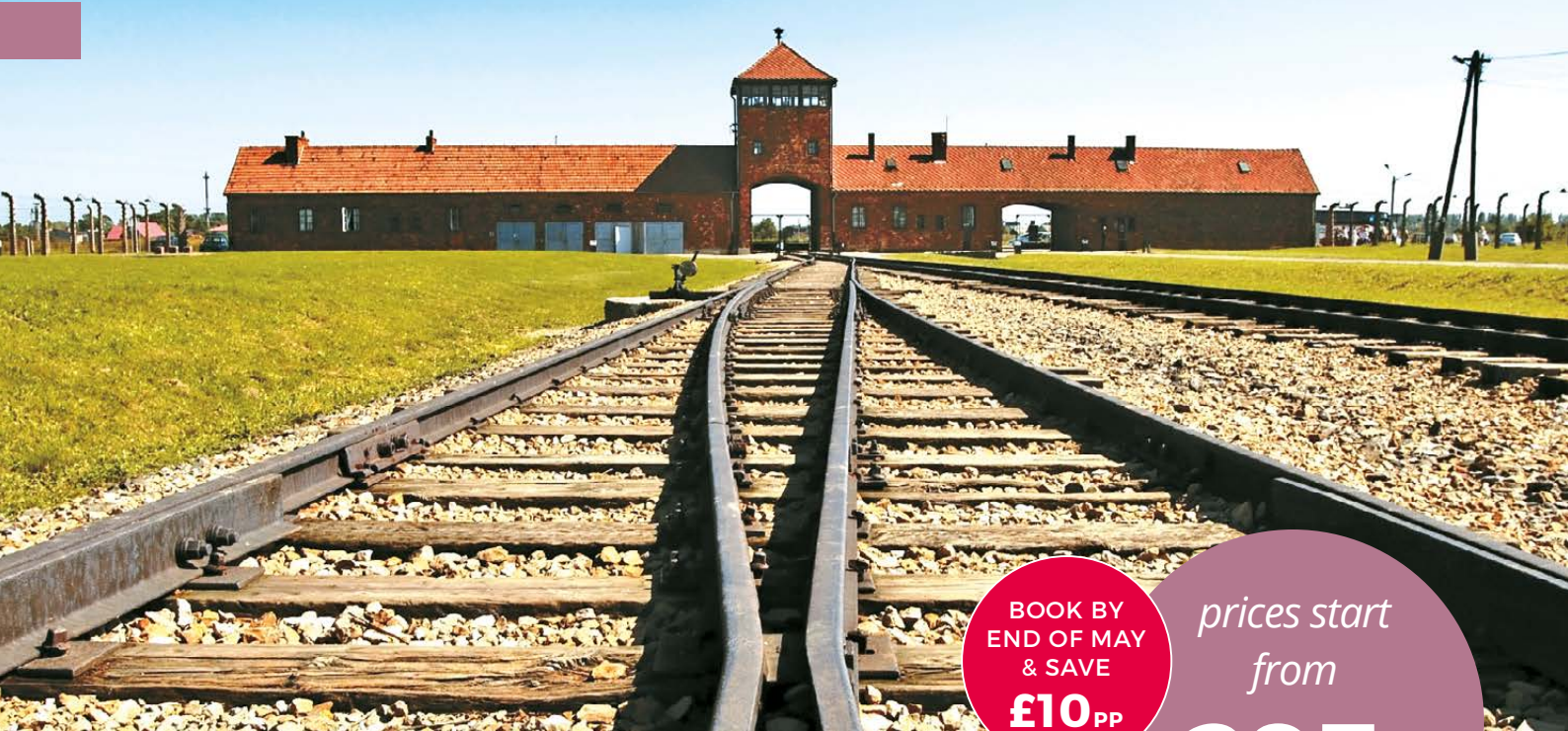
A modern hostel, in an ideal location for pupils, located in Leopoldstadt, between the Augarten Park and the Danube Canal.



MEININGER HOTEL VIENNA CENTRAL STATION

A modern hostel offering excellent facilities for groups. Located in the south of Vienna, in the 10th district, and within walking distance to shops and public transport.

Price includes: 3 nights' B&B accommodation, return flights from a London airport (other departure airports are available) & overseas airport transfers, visits shown in sample itinerary, extensive group travel insurance, services of an NST Educationalist Guide, 1 in 10 free place ratio. Price shown based on 35 paying passengers travelling in November 2019.



BOOK BY
END OF MAY
& SAVE
£10 pp

prices start
from
£295 pp
See page 11 for what's included

Krakow

Evidence of war on Europe's Jewish population in ghettos such as Podgorze, coupled with a visit to Auschwitz-Birkenau, will enable pupils to analyse the persecution which took place. Pupils can consider the topics of conformity and obedience in Nazi Germany, possible psychological profiles of those involved and even discuss actual experiences with a concentration camp survivor, or relative at the Galicia museum.



NST's Psychology Educationalist Guides

Our Psychology Educationalist Guides have a strong teaching background and a great deal of relevant expertise. They aim to educate, entertain and enthuse your pupils, and facilitate their understanding.

Study themes

- Social Influence: Conformity
- Cognition
- Obedience
- Ethics
- Prejudice & Discrimination
- Tyranny
- Aggression
- Dysfunctional Behaviour

Trip highlights

PRICING KEY FOR VISITS **FREE** Free £ Under £5pp £ £ Under £10pp £ £ £ £10pp+



FREE

KAZIMIERZ

This historic Jewish district was left deserted as residents were forced by Nazis to move to the Podgorze ghetto. Visit the old synagogues and the cemetery, as well as iconic Jewish sites and museums.



FREE

PODGORZE

Also the location of Schindler's Factory, pupils can explore the ghetto and consider the anti-Semitic events which took place here before large numbers of Jews were sent to labour and death camps.



£

KRAKOW UNDER NAZI

OCCUPATION MUSEUM Also referred to as the Schindler Museum, this visit not only tells Schindler's story but covers every aspect of the Polish and Polish-Jewish experience of occupation in a way that is hugely relevant to British pupils.

Trip highlights continued



AUSCHWITZ-BIRKENAU

Auschwitz serves as a poignant reminder of the horrors of Hitler's tyranny and a guided visit will give pupils a fuller view of the terrible events and conditions, also allowing consideration of key study themes, including obedience, prejudice and tyranny.



GALICIA MUSEUM

Presenting Jewish history from a new perspective, this private museum celebrates the Jewish culture of Galicia and poignantly commemorates the victims of the Holocaust through its moving photographic exhibition and interactive workshops.



MEET WITH A CONCENTRATION CAMP SURVIVOR OR RELATIVE

Groups have the invaluable opportunity to meet and speak with either a concentration camp survivor or a member of a survivor's family.

Don't miss...

• KRAKOW OLD TOWN **FREE**

Now a UNESCO World Heritage Site, the old town was entered by German forces in 1939. Museums, schools and theatres closed, arrests were made and synagogues were destroyed. The tyrannies continued until 1945 when the German army was forced to withdraw.

• OLD TOWN SQUARE **FREE**

Visit Rynek Główny (Town Square), the largest in medieval Europe, Mariacki Church (St Mary's Church) of Gothic origins with its fine altar, Sukiennice (Cloth Hall) of vast proportions and view the University District and the Collegium Maius - the historic heart of the university area.

• WAWEL HILL **FREE**

In a fortified position overlooking the river and city are the Castle and Cathedral.

• WIELICZKA SALT MINES **£ £**

With a labyrinth of tunnels, Wieliczka Salt Mine is an eerie underworld which has been hand carved from salt blocks. Located 14km south east of Krakow, here your pupils have the opportunity to view a section of the mine and 22 chambers connected by galleries. A fascinating trip.

• TRADITIONAL JEWISH RESTAURANT **£ £ £**

Enjoy Jewish culture with a traditional Jewish meal at a local restaurant, with a range of delicacies to be experienced, including czulent (bean casserole), knyshe (dumplings) and stuffed gooseneck.

SEE MORE ONLINE



Where you will be staying



BEST WESTERN HOTEL GALICYA

The Best Western Hotel Galicya is a modern hotel, 3 kilometres away from the city centre, with friendly staff, offering a good standard of accommodation.



HOTEL WYSPIANSKI

This hotel offers comfortable accommodation and is situated in a fantastic central location. The Wyspianski is just 200 metres from the Old Town Market Square (a 5-10 minute walk) and 500 metres from Wawel Hill.

Suggested itinerary

- Day 1** Daytime flight & transfer with assistance to accommodation. Free time in Krakow for orientation.
- Day 2** **Guided walking tour of Krakow - Old Town Square area.** Entry to the **Schindler Museum & exploration of Kazimierz and Podgorze** followed by a visit to **Galicia Museum** to meet with a **Concentration Camp Survivor or relative.**
- Day 3** **Full day coach excursion to Auschwitz-Birkenau including a guided tour.** Free time in **Krakow Old Town.**
- Day 4** Visit the **Old Town Square.** Transfer to airport for return flight to UK.

For prices for this itinerary, please call us.

Price includes: 2 nights' B&B accommodation, return flights from a London airport (other departure airports are available) & overseas airport transfers, extensive group travel insurance, 1 in 10 free place ratio. Price shown based on 35 paying passengers travelling in October 2019.



BOOK BY
END OF MAY
& SAVE
£10 pp

prices start
from
£279 pp
See page 13 for what's included

Berlin

The capital city of Germany is identified in most people's minds with events of World War II, as home to the largest Jewish community in Germany and seat of Nazi power. However, arguably, more recent events have a greater effect on what you see of the city today – the effects of the Berlin Wall which divided the city for 28 years imposing a Communist regime on the residents.



NST's Psychology Educationalist Guides

Our Psychology Educationalist Guides have a strong teaching background and a great deal of relevant expertise. They aim to educate, entertain and enthuse your pupils, and facilitate their understanding.

Study themes

- Social Influence: Conformity
- Prejudice & Discrimination
- Tyranny
- Persecution
- Minority Influence
- Cultural Influence

Trip highlights

PRICING KEY FOR VISITS FREE Free £ Under £5pp £ £ Under £10pp £ £ £ £10pp+



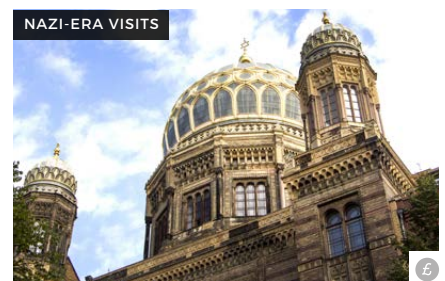
WALKING TOUR OF KEY NAZI SITES

When travelling with an NST Educationalist Guide, you can cover a number of key historical sites, placing them in the context of your curriculum and providing your group with full commentary.



HOLOCAUST MEMORIAL

The Memorial to the Murdered Jews of Europe, created by architect Peter Eisenman, is an emotional and imposing addition to the landscape of central Berlin. The memorial's 2,711 concrete slabs cover an area of 4.7 acres.



NEUE SYNAGOGUE

When inaugurated in 1866, the Neue Synagoge was one of the largest in the world. Damaged during Kristallnacht, the building was destroyed during the war. The front section and dome were restored in the 1980s and now house a fascinating museum.

Trip highlights continued



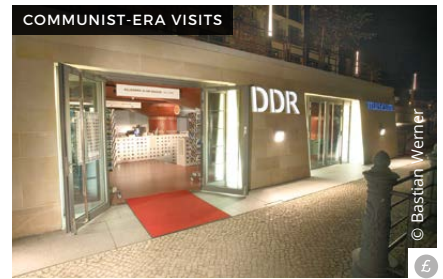
MEET WITH AN EX-POLITICAL PRISONER at Hohenschönhausen Memorial

A rare, memorable opportunity! We can arrange for a guided tour to be taken by an ex-political prisoner, providing a great opportunity to discuss experiences first hand.



BERLIN WALL

The Bernauerstrasse Memorial allows pupils to see remains of the Berlin Wall as well as an exhibition on Berlin during the Cold War. The East Side Gallery is the longest surviving stretch of the wall and is nearly 1.5km long.



DDR MUSEUM

This interactive museum immerses pupils into daily life during the Communist era in East Berlin. Take a virtual drive round an East German housing estate and see the methods used to change the collective mindset, such as collective potty training.



JEWISH MUSEUM

Take a guided tour of this museum which chronicles the history of Jews in Berlin in a 'mind-blowing building' designed by the architect Daniel Libeskind. Exhibits look at life for Jewish people before the war and explore the personal experiences and life stories during the Holocaust.



WALLMUSEUM-HAUS AT CHECKPOINT CHARLIE

This fascinating museum includes exhibitions and demonstrations about the legendary border crossing point. Your group will have the opportunity to explore what drove some people to go along with the collectivist culture, and others to resist.



SACHSENHAUSEN MEMORIAL SITE

One of the earliest and most important in Germany, the story of the camp from its origins, its development within the camp system, its wartime use, the liberation and its post-war history during the Soviet period, are told in a series of exhibitions within the extensive remains of the camp itself.

Don't miss...

- German Resistance Memorial Centre **FREE**
- Berlin Bunker tour £ £
- Topography of Terror **FREE**

SEE MORE ONLINE



Where you will be staying



MEININGER HOTEL BERLIN CENTRAL STATION

A very modern and comfortable hotel which offers a high standard of room as well as good in-house facilities. It is strategically-located in the heart of Berlin, with excellent access to public transport.



SCHULZ HOTEL BERLIN

A large hotel with 350 rooms centrally located. Built with school groups in mind, modern and comfortable with excellent facilities.

Suggested itinerary

- Day 1** Daytime flight & transfer to accommodation.
Introductory tour of Berlin.
- Day 2** **Walking tour of Berlin centre & key Nazi sites - The Neue Synagoge, The old Jewish District, The Holocaust Memorial & more.**
Free time in **Potsdamer Platz.**
- Day 3** **Coach excursion to Sachsenhausen Memorial Site.**
Visit to **Topography of Terror.**
- Day 4** **DDR Museum.**
Transfer to the airport for return flight to the UK.

For prices for this itinerary, please call us.

Price includes: 2 nights' B&B accommodation, return flights from a London airport (other departure airports are available) & overseas airport transfers, services of an NST Berlin City Representative to assist with check-in & provide 24hr assistance, extensive group travel insurance, 1 in 10 free place ratio. Price shown based on 35 paying passengers travelling in November 2019.



Preston Lodge High School

**BOOK BY
END OF MAY
& SAVE
£20 PP**

prices start
from
£699 pp
See page 15 for what's included

New York

The entry point to land of the free for the 1880-1920 wave of immigration, then mass post-World War II immigration, including Jewish Holocaust survivors from Europe created a post-war economic boom in New York. A combination of excellent immigration and Holocaust-focused visits, together with world-famous New York tourist attractions create the ultimate trip for psychology and sociology pupils.



Local guides

Our local guides are ideal for groups that would prefer to be guided around specific sites. With excellent local and cultural knowledge, your guide will provide useful information, showcasing many hidden gems and sharing lesser-known facts.

Study themes

- Immigration
- Terrorism
- Memory
- Dysfunctional Behaviour
- Stereotyping
- Social Identity
- Prejudice
- Influence
- Tyranny
- Psychology of Media
- Multiculturalism

Trip highlights

PRICING KEY FOR VISITS **FREE** Free £ Under £5pp £ £ Under £10pp £ £ £ £10pp+



£ £ £

UN BUILDING

On this guided tour around the UN Building, your group will explore the broad range of fundamental issues dealt with here, from sustainable development, democracy and human rights, to governance, economic and social development.



£ £ £

9/11 MEMORIAL MUSEUM

The museum explores the implications of the events of 9/11, documenting the impact of those events and exploring 9/11's continuing significance.



£ £

HARLEM CIVIL RIGHTS TOUR

Consisting of a multimedia bus/walking tour or a guided walking tour, this experience takes you to the heart of the Civil Rights Movement in Harlem and to the very sites where history happened.

Trip highlights continued



MEET A VETERAN OF THE CIVIL RIGHTS MOVEMENT

NST has developed links with key figures within the Civil Rights Movement who would like to share their unique experiences with our groups. Spend an hour in the presence of men and women who worked and campaigned alongside Martin Luther King.



TENEMENT MUSEUM

Highlighting the experiences of poor 19th century and early 20th century immigrants. The museum tells the stories of one tenement apartment that was home to nearly 7,000 working class immigrants.



WALKING TOUR OF MIDTOWN OR DOWNTOWN MANHATTAN

Our local guides will bring the history and culture of New York to life. Walk down world-famous streets such as Fifth Avenue, 42nd Street, Broadway, through Central Park, Times Square, Chinatown and SoHo.

Don't miss...

• **NATIONAL SEPTEMBER 11 MEMORIAL** **FREE**
Honouring the 2,983 who perished in the terrorist attacks of September 11, 2001 and February 26, 1993, the memorial allows visitors to come together again in the spirit of unity and courage that emerged in the wake of 9/11. The memorial consists of two pools set in the footprints of the Twin Towers, surrounded by a plaza of more than 400 trees. The names of the victims are inscribed in bronze around the pools.

• **ELLIS ISLAND IMMIGRATION MUSEUM & THE STATUE OF LIBERTY CRUISE** **£ £ £**
Opened in 1892 as a federal immigration station, millions of immigrants passed through the station. The museum's self-guided exhibits chronicle Ellis Island's role in immigration history and include artifacts, photographs, prints, videos, interactive displays, oral histories, and temporary exhibits.

• **TOP OF THE ROCK** **£ £ £**
The observation desk at the top of the Rockefeller Center provides an unobstructed, 360° view of New York.
• **LANDMARK CRUISE** **£ £ £**
A spectacular view of Manhattan from the water.
• **THE JEWISH MUSEUM** **£ £**
Exclusively devoted to Jewish culture and art.

SEE MORE ONLINE

Where you will be staying



VANDERBILT YMCA

Youth hostel offering simple standard of accommodation but excellent value with the benefit of a central location.



MANHATTAN AT TIMES SQUARE

A comfortable hotel offering a good standard of accommodation in an excellent central location.



HOLIDAY INN EXPRESS MANHATTAN MIDTOWN WEST

A medium sized hotel, centrally located in the Midtown West area of Manhattan. Modern and spacious, featuring sophisticated boutique furnishings and contemporary amenities.

Suggested itinerary

- Day 1** Daytime flight & transfer to accommodation.
Visit to the **Top of the Rock**.
- Day 2** **Statue of Liberty cruise** with visit to the **Ellis Island Immigration Museum**.
Lower East Side (key immigration area) walking tour & Tenement Museum visit.
- Day 3** **UN Building tour.**
9/11 Memorial Museum.
Free time in **Times Square**.
- Day 4** **Meet a veteran of the Civil Rights Movement.** Transfer to airport for overnight return flight to the UK.
- Day 5** Arrive back in the UK.

For prices for this itinerary, please call us.

Price includes: 5 days, 3 nights' room only accommodation, return flights from a London airport (other departure airports are available) & overseas airport transfers, extensive group travel insurance, 1 in 10 free place ratio. Price shown based on 35 paying passengers travelling in December 2019.

PSYCHOLOGY
LIVE!



at **Disneyland**
PARIS

Psychology LIVE! Disneyland® Paris Monday 9th March 2020

An immersive event allowing students to grasp the fundamentals of human behaviours in action whilst providing relevant examples and case studies for exams.

Our LIVE! student event combines:

- ✓ **Expert speaker presentations**
 - current issues linked to key topics covered in the AQA, OCR and Edexcel A-Level curriculum.
- ✓ **Q&A session**
 - with industry practitioners; learn about careers associated with the subject.
- ✓ **Team park challenges**
 - develop arguments and draw conclusions about how psychological principles/theories are applied across the resort in order to stimulate specific behaviours and responses.

Psychology LIVE! is designed to meet course aims by encouraging and developing an enthusiasm for studying psychology as well as inspiration for how to progress further in the subject.

For more information see flyer or visit www.nstgroup.co.uk



CALL **0845 293 7975** EMAIL INFO@NSTGROUP.CO.UK VISIT NSTGROUP.CO.UK



NST, Discovery House, Brooklands Way,
Whitehills Business Park, Blackpool,
Lancashire, FY4 5LW

Printed on
Forestry Commission
paper stock.